



| FRONT VIEW |



| REAR VIEW |



| FRONT VIEW |



| REAR VIEW |



| CAGE DESIGN |

Ceiling	CD597A, Painted Steel (P021), Skylite 10T, Indirect Lighting
Wall	Hairline-Finished Stainless Steel, Hairline Etched Stainless Steel (SE1172)
Car Doors	Hairline Etched Stainless Steel (SE1172)
Operating Panel	OPP-N241B / OPP-N241W (Hairline-Finished Stainless Steel)
Indicator	PI-D110
Handrail	Stainless Steel 1 Pipe / Polished (1B)
Flooring	Sense Tile (TN2402C)

Notes : 1. Finished product may vary slightly from these prints.
2. The price will vary depending on the customer's specification.
3. The split may vary depending on the capacity.



| CAGE DESIGN |

Ceiling	CD451B, Acryl, Acryl Lens, Painted Steel (P022)
Wall	Hairline Etched Stainless Steel (SE1169)
Car Doors	Hairline Etched Stainless Steel (SE1169)
Operating Panel	OPP-N240B
Indicator	PI-D600
Handrail	Stainless Steel 1 Pipe (1A)
Flooring	Polyvinyl Tile (TN2401C, TN2406C)

Notes : 1. Finished product may vary slightly from these prints.
2. The price will vary depending on the customer's specification.
3. The split may vary depending on the capacity.



| FRONT VIEW |



| REAR VIEW |



| FRONT VIEW |



| REAR VIEW |



| CAGE DESIGN |

Ceiling	CD253A, Painted Steel (P021, P022), Skylite 10T, LED Down Light
Wall	Hairline Etched Stainless Steel (SE1168), Hairline-Finished Stainless Steel
Car Doors	Hairline Etched Stainless Steel (SE1168)
Operating Panel	OPP-N240B / OPP-N240W (Hairline-Finished Stainless Steel)
Indicator	PI-D110
Handrail	Stainless Steel 1 Pipe + Coated Chrome Bracket (1B)
Flooring	Polyvinyl Tile (DTE2241, DTE2246)

Notes: 1. Finished product may vary slightly from these prints.
2. The price will vary depending on the customer's specification.
3. The split may vary depending on the capacity.



| CAGE DESIGN |

Ceiling	CD291C, Acryl, Painted Steel (P021)
Wall	Mirror-Trimmed Stainless Steel, Hairline Etched Stainless Steel (SE1673)
Car Doors	Hairline Etched Stainless Steel (SE1673)
Operating Panel	OPP-N241B
Indicator	PI-D110
Handrail	Stainless Steel 1 Pipe + Coated Chrome Bracket (1B)
Flooring	Polyvinyl Tile (TN2422C, TN2601C)

Notes: 1. Finished product may vary slightly from these prints.
2. The price will vary depending on the customer's specification.
3. The split may vary depending on the capacity.



| FRONT VIEW |



| REAR VIEW |



| CAGE DESIGN |

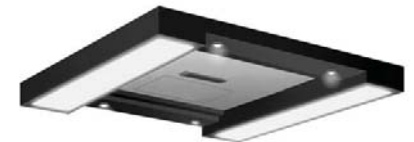
Ceiling	CD251A, Painted Steel (P022), Acryl, Convective Air Sterilization System
Wall	Hairline-Finished Stainless Steel, Mirror-Etched Stainless Steel (SE1184)
Car Doors	Mirror-Etched Stainless Steel (EE008)
Operating Panel	OPP-N241B (Mirror-Finished Stainless Steel)
Indicator	PI-D110 (Dot Type)
Handrail	Stainless Steel 1 Pipe + Aluminum die casting (1A)
Flooring	Marble

Notes: 1. Finished product may vary slightly from these prints.
 2. The price will vary depending on the customer's specification.
 3. The split may vary depending on the capacity.

| Ceiling



CD251A
(P022 / Acryl / Convective Air Sterilization System)



CD253A
(P021, P022 / Skylite 10T / LED Down Light)



CD451B
(P022)



CD516B
(Indirect Lighting / Convective Air Sterilization System)



CD519D
(Indirect Lighting / Aluminium Silver / Convective Air Sterilization System)



CD597A
(P007, Lusterless White / Skylite 10T / Indirect Lighting)

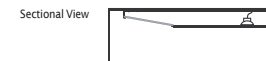
| LED Ceiling



CD299B
(P023 / LED Lighting (Daylight) / LED Down Light / Skylight / Anion Air Cleaner)



CD569A
(Aluminium / Acryl / Sheet / LED Lighting (Daylight) / Anion Air Cleaner)



Notes: 1. Finished product may vary slightly from these prints.
 2. The color of painted steel sheet can be changed according to the car wall color.
 3. If car wall is stainless steel, P019 is recommended. The other materials need to be specified separately.